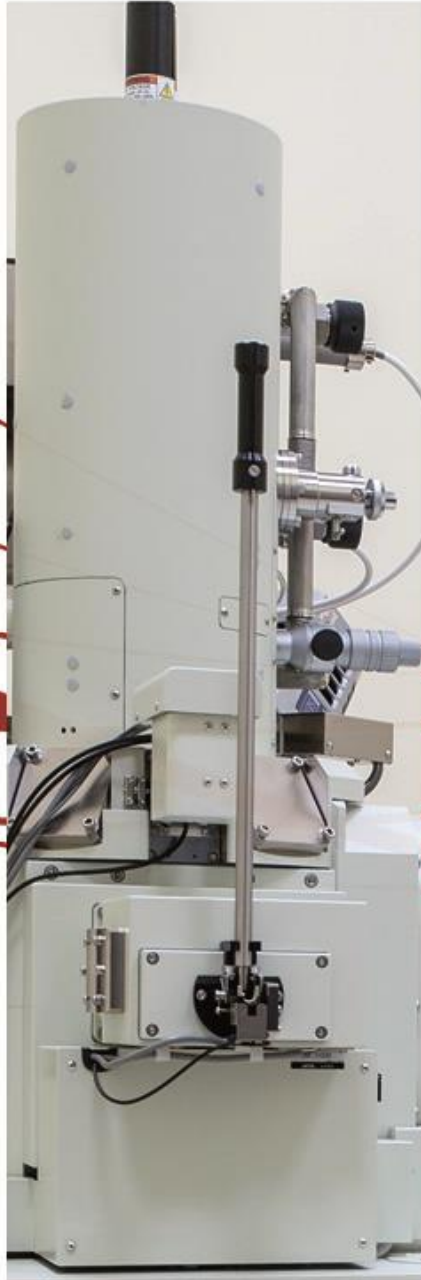


JSM 7600



- * Schottky field emission gun
- * Detector “in lens” SEI/BEI: Upper collector, scintillator, photomultiplier tube
- * Detector in sample camera
- * Lower Backscattered Electron (BE) detector
- * Gentle Beam (GB)
- * Acceleration voltage: 0.1 to 30 kV
- * Resolution:
 - Secondary electrons (SEI):
 - 0.1 nm a 15 kV
 - 1.5 nm a 1 kV in GB mode
 - 2.5 nm a 1 kV in SEM mode

